

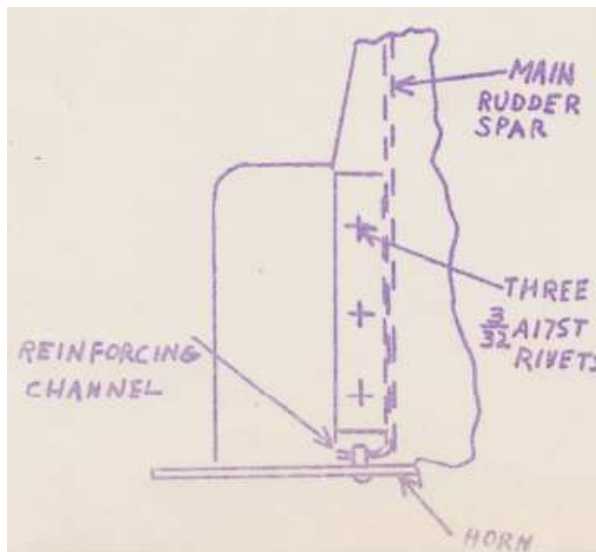
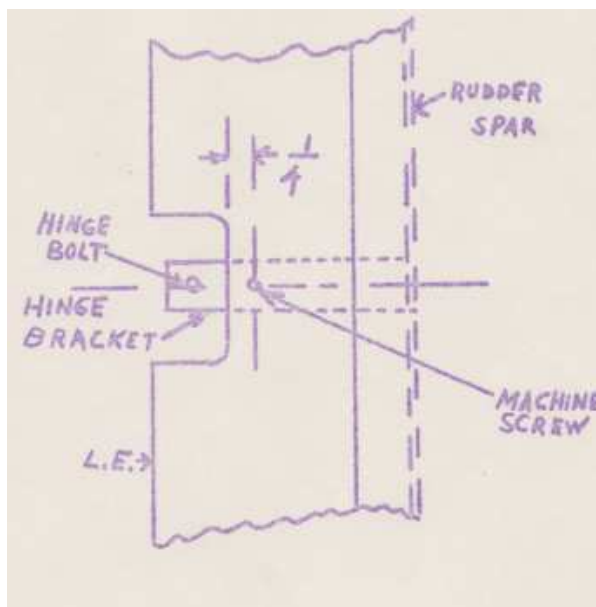
LUSCOMBE AIRPLANE CORPORATION
West Trenton, New Jersey

ENGINEERING BULLETIN NO. 3
MODEL NO. 8

January, 1939

Drill through upper rudder hinge as shown and insert No. 8 steel machine screw and elastic nut. On later serial numbers this hinge bracket is tapered, and it will be necessary to substitute a bracket with straight sides which will be sent to you.

This step is necessary to relieve the lower hinge. Inspect the attachment of lower hinge and if cracks have developed in the spar or rib reinforce with .040 dural or steel channel as shown.



Retyped March 1, 1960
SILVAIRE AIRCRAFT CO.
P.O. BOX 719
FORT COLLINS, COLORADO

ped