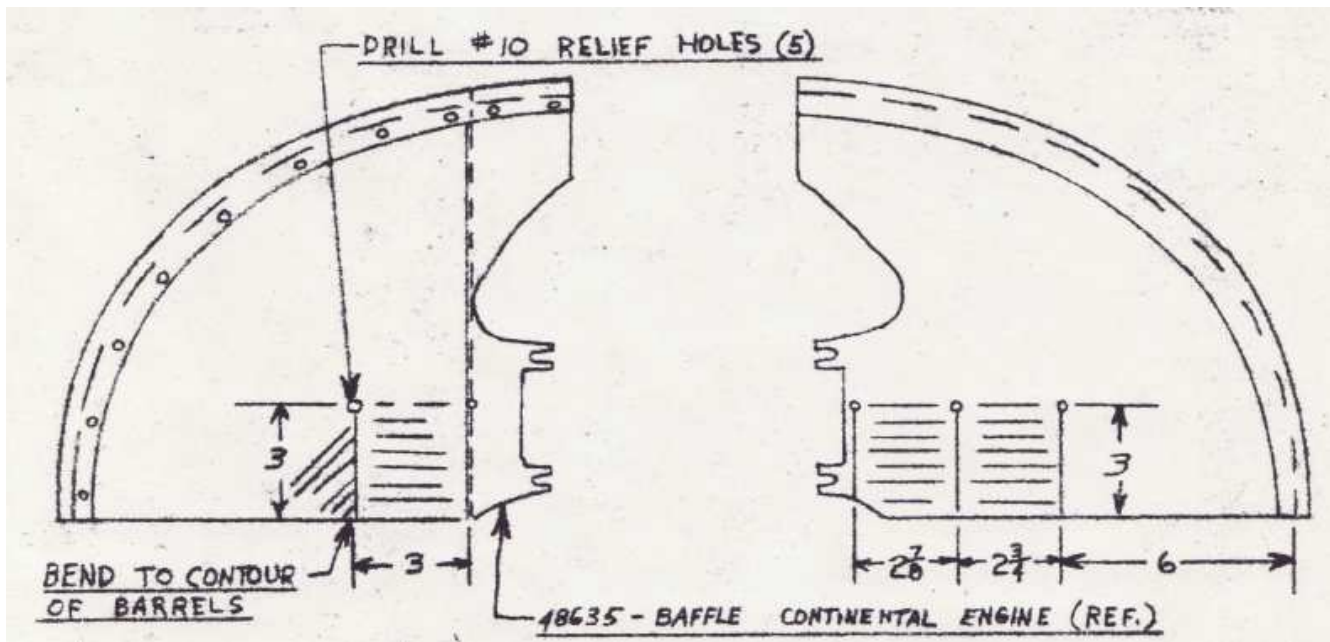


REFERENCE: Airplanes equipped with Continental Injector Type Engines - A-65 J

Baffling should be arranged for better engine cooling according to sketches No. 1, No. 2, and No. 3.

Cut the pressure baffle furnished with airplane as shown on sketch #1 below. Bend lower edge forward to follow contour of barrels.



Assemble baffles as shown on attached sketches #2 and #3.

Assemble manifold caps on manifold using heater lugs on manifold.

Incidentally, the oil temperature may be lowered 3 or 4 degrees by painting the oil tank black

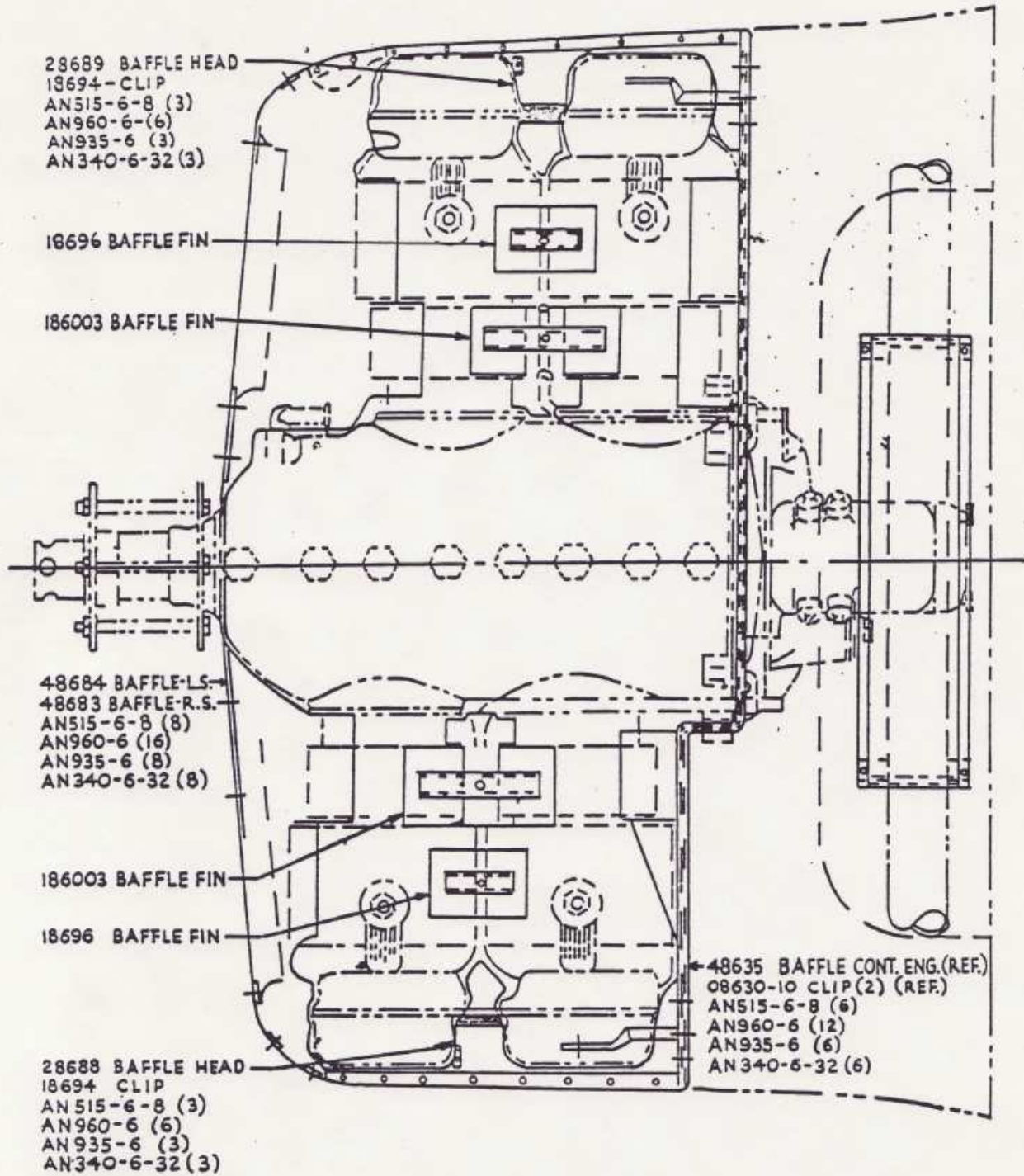
LUSCOMBE AIRPLANE CORPORATION

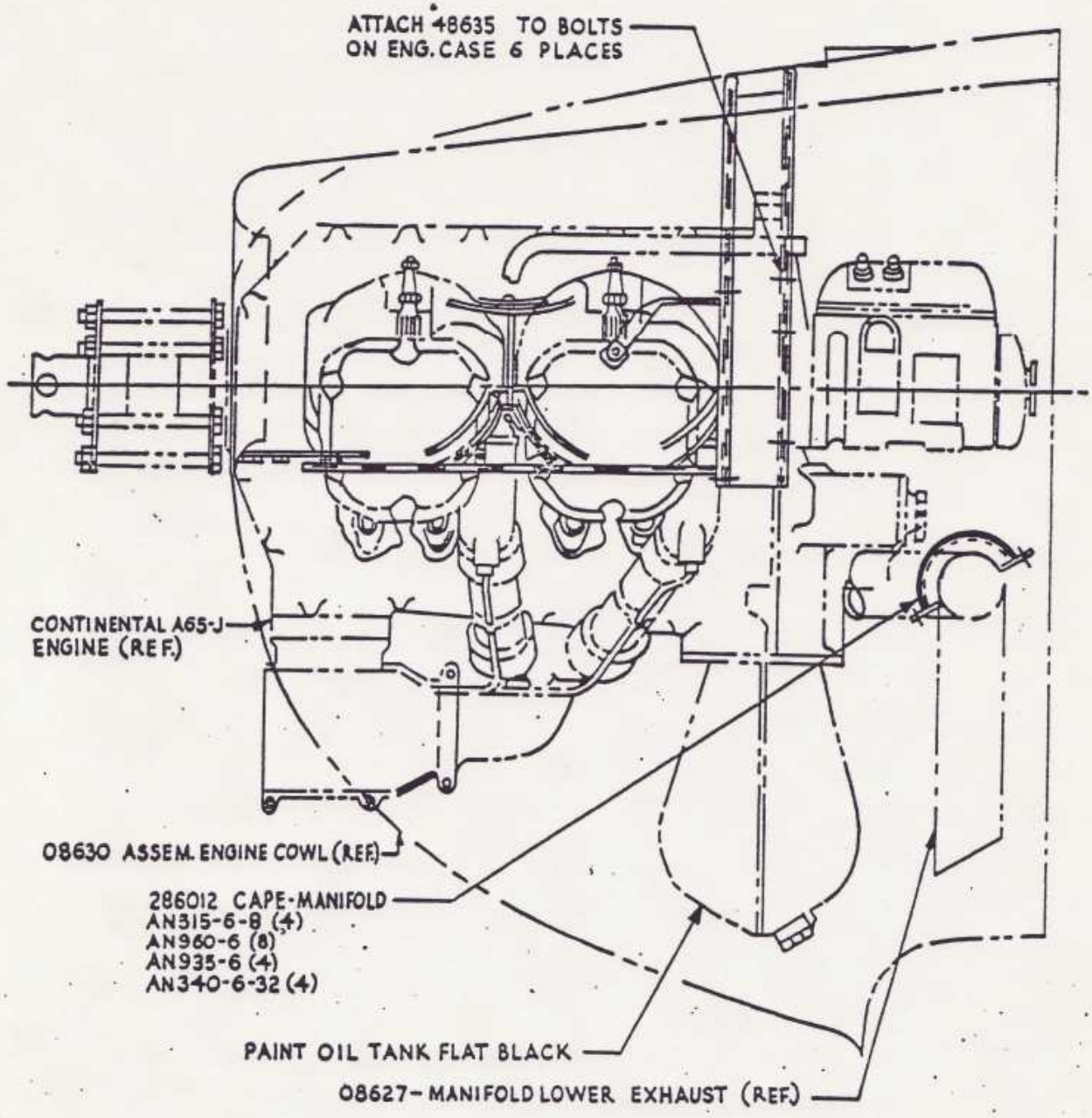
/s/ James G. Rising

CHIEF ENGINEER

Retyped and Revised March 3, 1960  
SILVAIRE AIRCRAFT CO.  
P.O. BOX 719  
FORT COLLINS, COLORADO

SKETCH No. 2





NOTE: THIS IS A PRESSURE BAFFLE SYSTEM  
 BAFFLES MUST FIT TIGHT ON ASSEMBLY.